

CIVIL IMPROVEMENT PLANS

FOR

TOLTEC MIDDLE SCHOOL

LOCATED IN A PORTION OF SECTION 28, TOWNSHIP 7 SOUTH, RANGE 7 EAST
OF THE GILA AND SALT RIVER MERIDIAN, PINAL COUNTY, ARIZONA

G&A GENERAL NOTES

- If the Contractor finds any discrepancy or omission, the engineer shall be notified before any interpretation is made.
- Quantities shown are for permit purposes only and are not for bidding or contracting purposes. The Contractor is responsible for bidding his own quantity take-off.
- Building materials containing asbestos will not be used on this project.
- The Contractor shall make no claim for quantity adjustment unless all construction survey stakes are maintained for verification.
- Nothing in the contract documents shall create any contractual relationship between the Engineer and the Contractor or the Engineer and the Subcontractor.
- The Engineer will not be responsible for construction or safety means, methods, techniques, sequences, procedures utilized in connection by the Contractor or Subcontractors.
- Change orders shall be executed in writing by the Owner or his representative. Verbal changes will not be honored.
- It will be the Contractor's responsibility to locate all existing underground utility facilities both horizontally and vertically prior to construction and take all necessary precautions to avoid any damage to existing underground facilities. Call the Blue Stake Center (602) 263-1100 or a private underground utility location company 48 hours prior to excavating. The Engineer and/or Owner cannot guarantee any elevations or locations of existing underground utilities shown on these plans.
- Utility companies serving this area are:
Water: Electric: APS Communications: CenturyLink
Sewer: Gas: Southwest Gas
- The existing background information on this drawing was obtained from field survey.
- The Contractor shall visit the site to verify the site survey information and observe any changes.

CITY OF ELOY CONSTRUCTION NOTES:

- All construction shall conform to the Maricopa Association of Governments (MAG) Uniform Standard Specifications and Uniform Standard Details for Public Works and to the City of Eloy Supplemental Standard Details. All work shall be performed by a Contractor licensed by the State of Arizona as determined by the Arizona Registrar of Contractors (A, A-12, A-16). A copy of all applicable details shall be on the project site at all times while work is being performed.
- Preconstruction Procedure:
 - All plans must be approved and signed by the City of Eloy.
 - Work shall not commence until a written "Notice to Proceed" has been issued by the City Engineer.
 - The Contractor shall notify the City Engineer a minimum of three days in advance of construction to request a preconstruction meeting only after receiving approved plans, and the "Certificate of Approval to Construct" from the Arizona Department of Environmental Quality and the signed construction agreement.
 - The Contractor shall not commence prior to being issued a notice to proceed.
 - The Contractor is responsible for obtaining all permits required to complete the work.
- Layout/Cut Sheet Submittal:
 - Layout / cut sheets shall be submitted to the City Engineer and verified prior to issuance of "Notice to Proceed". These layout / cut sheets shall show all stationing and cuts for all valves, connections, hydrants, services, fittings, etc. to be included in the proposed system. All cuts will be to pipe invert. Stationing must begin at a known permanent point which will remain visible after completion of construction. No work is allowed in areas that have no approved layout / cut sheets:
 - An Arizona registered land surveyor shall certify that the elevations on the submitted layout sheets are the existing elevations and proposed final grades as of the date of survey. The new main shall have no less than 36" of cover during construction.
 - Curves with a radius of 300 feet or less shall be stationed every 25 feet. Curves with a radius greater than 300 feet shall be stationed at a minimum of 50 foot intervals.
 - Cuts for the end location of services, fire hydrants, and fire hydrant or fire service stub outs shall be shown to the final grade. Stationing and cuts for the fire hydrants and the fire hydrant stub outs shall be shown both at the main and at their end locations stationing and cuts for service shall be shown at their end locations.
 - Construction staking shall reflect the information shown on the layout / cut sheets. The distance and direction of the offset lines in relation to the water lines shall be clearly noted.
 - Lost or damaged offset hubs shall be maintained and immediately replace if lost or damaged.
 - If inverts are provided on the approved plans, hub elevations for the offset line shall be shown on the layout / cut sheet.
 - The owner shall replace at his or her expense any existing survey monumentation damaged or disturbed during construction (including property pins). The replacement shall be made by an Arizona registered land surveyor and a record of survey will be required.
- The Contractor shall comply with applicable Arizona reserved statutes pertaining to "Blue Stake".
- Water mains shall be installed after sewer installation and after grading of street and walk areas to within 6" of final grade.
- Water mains shall be installed with a minimum of 44" of cover from final grade except as otherwise noted on the approved plans.
- Water mains installed within rights-of-way that are not at final grade shall be installed with a minimum of 60" of cover from the future final grade except as otherwise noted on the approved plans.
- Terms of pavement cuts shall be obtained from the City Engineer. the Contractor shall comply with all terms for pavement cuts.
- The backfill material, compaction, and pavement patch shall be in accordance with MAG Section 601, per the written direction of the City Engineer.
- Joint use trenches are accepted only with the written authorization of the City Engineer. With electric telephone or gas facilities parallel water facilities, they shall not be installed with less than 6' horizontal clearance from the water main.

CITY OF ELOY CONSTRUCTION NOTES: (CONT.)

- Only approved plans shall be used for the installation of water facilities. Approved plans requiring revision shall be approved by the City Engineer prior to start of revised work, changes requiring a revision:
 - Adding or deleting new water mains.
 - Rerouting of new water main greater than 12" from the original location.
 - Adding, deleting or relocating or changing the size of a new water service.
 - Adding, deleting, or changing the size of a new fire service.
 - Adding, deleting, or relocation a new fire hydrant.
 - Changing easements.
 - Change in Owner / Developer name.
- Reclaimed water mains shall be considered the same as sewer when installed within proximity of a potable water main.
- Fire hydrants shall be set at curb returns, common lot lines, or as indicated on the approved plans, as directed by the responsible fire authority, and in accordance with MAG Standard Detail 360.
- The Owner/Developer shall have all curb stops located and is responsible for their protection during all phases of construction until water meters are installed. Water services shall be set in a flat strip of land which parallels the curb, sidewalk, or meter main. This 3' strip of land shall not exceed the top of curb or sidewalk nor be below the bottom of curb or sidewalk. The owner/developer shall be responsible for protecting all curb stops during all phases of construction. No meters will be released prior to final acceptance without written permission for the City Engineer. Prior to applying for a meter, the Owner/Developer is responsible for the protection of the meter and meter box until the account is transferred to the homeowner. All meter boxes must be installed according to the published standard specifications and details. Meter boxes broken or removed by the Contractor will be replaced or reset in accordance with the City of Eloy standards at the Contractor's expense.
- Set angle meter stops 8" behind back of curb in streets with curbs and 8" below finished grade.
- Set angle 3' from property line in streets without curbs and 8" below finished grade.
- Angle meter stops shall not be installed at the same lot corner as the electric service or transformer must have a minimum horizontal separation of 10'.
- The Contractor shall have all water valves identified and located prior to paving and shall have all valve boxes set to final grade after paving in accordance with MAG Section 354.
- Only improvements shown in the approved water plans may be installed as part of the public water system.
- Passing microbiological test results are required prior to final acceptance. the test is the responsibility of the Contractor; however the chain of custody must be through the authorized City of Eloy water department representative. A sieve analysis of the bedding and backfill material is required prior to final acceptance.
- Where existing services are to be relocated, the Contractor shall be responsible for relocating those services to the new locations as shown in the approved plans. Relocation work shall include, but not be limited to, new service saddles and taps, new service pipe, angle meter stops, ball valves, tracer wire, detector tape, setting new meters (provided by the City of Eloy Water Department), and meter boxes and all work necessary to reconnect the private plumbing.

CITY OF ELOY CONSTRUCTION NOTES: (CONT.)

- Where existing services are to be abandoned, the Contractor shall be responsible for removing and salvaging all associated materials relevant to the abandoned services, including closing and plugging the existing corporation stop, in accordance with the approved plans.
- Salvaged materials are the property of the City of Eloy water department.
 - Materials salvaged will be delivered to an approved City of Eloy salvage and maintenance yard or to a public landfill at the discretion of the City of Eloy water department's authorized representative. Salvage and disposal are the responsibility of the Contractor.
 - Water line abandonment in place will be examined on a case by case basis. Valve risers and riser pipe will always be removed for paved areas, and backfilled and compacted with aggregate base course compacted to the minimum density specified in MAG Section 601. The pavement patch shall be subject to the conditions of the right-of-way permit.
- The Contractor shall maintain water service at all times and shall minimize water service interruption to existing water services during all activities within the project area. All existing meters and lines found in conflict with the new water main alignments whether or not shown on plans shall be supported across the trench by the Contractor. Existing water meters shall remain in place and are not to be disturbed and/or relocated by the Contractor during water main trenching and installation operations and shall remain accessible for reading or maintenance during construction. The Contractor shall be held liable for any damaged to existing water meters and/or service lines that occur during his trenching and water main installation operations.
- Major utility locations are shown on the plans. The Contractor shall coordinate the protection of all underground and overhead utilities in the project area, whether shown on the approved plans or not. The Contractor shall be responsible for any necessary repairs at his own expense.
- Inspectors employed by the agency shall be authorized to inspect all work done and materials furnished. Such inspection may extend to all or any part of the work and to the preparation, fabrication or manufacture of the materials used. The inspector shall not be authorized to alter or waive the provisions of the contract. The inspector shall be authorized to issue instructions in keeping with the design intent of the plans and specifications. The inspector shall have the authority to reject defective materials or work. The inspector shall be the sole interpreter of the specifications. Items of work requiring inspection prior to being backfilled or otherwise concealed by the Contractor, include but are not limited to the trench depth and location, pipe materials, and installation, temporary plugs, taps and tie-ins, services, drain assembly, bedding and detectable and marking tape installation. Any work done or materials used without inspection by the City of Eloy Water Department may be ordered uncovered and removed or replaced at the Contractors expense even if the uncovered work is determined to be unacceptable.
- Only approved materials per the approved materials cost will be accepted.
- All fittings, valves, flexible couplings, and repair clamps shall be encased with a 10 mil polyethylene in accordance with AWWA C-105, Method C.

CIVIL ENGINEER

Gervasio & Associates, Inc.
77 E. Thomas Rd., Suite 120
Phoenix, AZ 85012
Contact: Jeff Price
Phone: (602) 285-1720
Fax: (602) 285-1530
Email: jip@gervasioeng.com

OWNER

Toltec School District
3315 North Toltec Road
Eloy, Arizona 85131
Contact: Jeff VanHandel
Phone: (520) 466-2351
Email: jvanhandel@cguhsd.org

SHEET INDEX

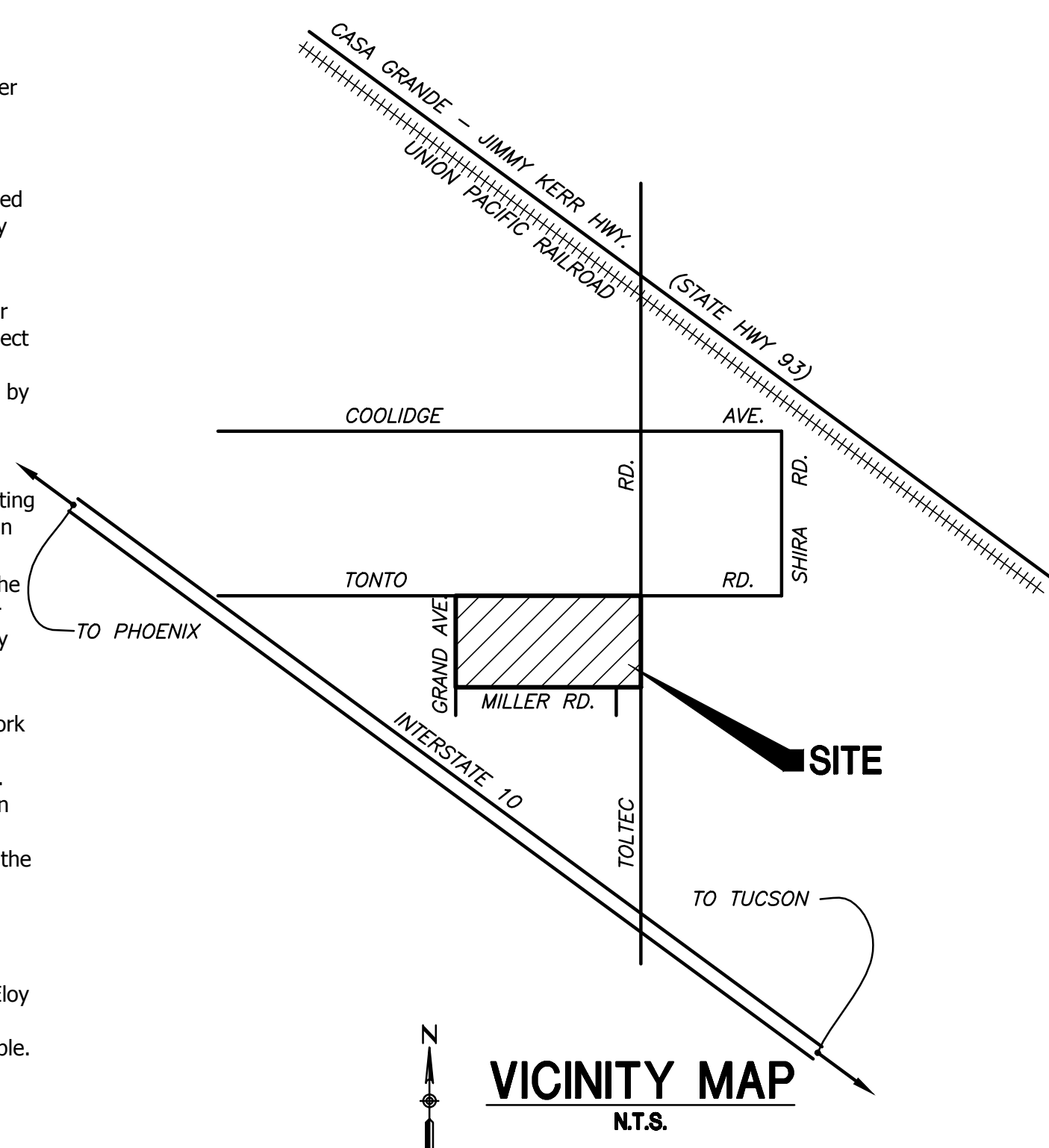
- | | |
|----|-----------------------|
| C1 | Civil Notes |
| C2 | Demo Plan & Details |
| C3 | Paving Plan & Profile |
| C4 | Paving Plan & Profile |
| C5 | Paving Plan & Profile |
| C6 | Paving Plan & Profile |
| C7 | Sections & Details |

QUANTITIES

Asphalt Milling (1.5")	1,342 SY
Sawcut and Remove Exist. Asphalt	1,298 SY
Sawcut and Remove Exist. Concrete	945 SY
Relocated Chainlink Fence	612 LF
New Chainlink Fence	5 LF
New 6" Single Curb, Type 'A'	550 LF
New 6" Vertical Curb & Gutter Type 'A'	507 LF
New 6" Mountable Curb & Gutter Type 'E'	80 LF
New 3' Valley Gutter	200 SY
New 6' Valley Gutter & Apron	37 SY
New Sidewalk	6,600 SF
New 36" CMP	44 LF
New U-Type Headwalls	2 EA
New 6" PCC Firelane	160 SY
New Curb Ramp (MAG 235-2)	2 EA
New Curb Ramp (MAG 235-5)	2 EA
Asphalt Thickened Edge	73 LF
Grouted D ₉₀ =4" RipRap	11 SY
New AC Pavement (1.5" Overlay)	2,014 SY
New AC Pavement (3" Over 8" ABC)	1,300 SY
Adjust Manhole Frame and Cover	2 EA
5' Curb Transition from Type 'A' to Type 'E'	1 EA
5' Curb Transition from Type 'E' to Type 'C'	1 EA

SITE MAP

N.T.S.



BOUNDARY SYMBOLS

Monument or Center Line

- ⊗ Brass cap in handhole
⊙ Brass cap flush

SITE SYMBOLS

Existing	Chain link fence (u.n.o.)	Proposed
---	Vert. curb & gutter	---
---	Concrete curb	---
---	Concrete	---
---	Asphalt	---

WATER, SEWER, STORM DRAIN, IRR. SYMBOLS

Existing		Proposed
⊠	Catch basin	N/A
⊠	Curb opening	N/A
○ SMH	Sewer Manhole (MH)	N/A
○ SCO	Sewer cleanout (SCO)	N/A
⊗ WV	Valve	N/A
⊗	Fire hydrant (FH)	N/A
⊠ WM	Water meter (WM)	N/A
N	Backflow prevention device (BFP)	N/A
⊠ SCB	Sprinkler control box (SCB)	N/A
⊗ ASV	Anti-siphon landscape valve (ASV)	N/A

GAS, COMM. & ELECTRIC SYMBOLS

Existing unless noted otherwise on plans		
⊙ GM	Gas meter	← Electrical guy down
⊠ TR	Telephone riser	⊠ X/FMR Electrical transformer
⊙ TV	Cable riser	⊠ EPB Electrical pull box

WET UTILITIES (DESIGN)

Existing		Proposed
---	Water	N/A
---	Irrigation	N/A
---	Sanitary sewer	N/A
---	Storm drain	---
---	Fireline	N/A
---	Gas	N/A

GRADING SYMBOLS

---	Contour	---
---	Grade break	---
---	Drainage slope	---
---	Flowline (Exist.)	---
---	Flowline (Prop.)	---

-SPOT ELEVATIONS (Add 1500')-

Existing		Proposed
+90.3	Natural ground	+12.3
+600.30	C = Concrete	+612.30

Full abbreviation list:

TC	= Top of curb	RIM	= Rim
G	= Gutter	INV	= Invert
P	= Pavement	TB	= Top of embankment
FL	= Flowline	BB	= Bottom of embankment
VG	= Valley Gutter		

ABBREVIATIONS

Some abbreviations may not apply to these drawings. For abbreviations not shown refer to MAG Uniform Standard Specifications for Public Works Construction (current edition).

BOTT.	Bottom	N.F.	Not found
B/C	Back of curb	N.T.S.	Not to scale
C.F.	Cubic feet	SB	Set Back
CLF	Chain link fence	S.F.	Square feet
COR.	Corner	S	Slope
ELEV.	Elevation	U.N.O.	Unless noted otherwise
EP	Edge of pavement	W/	With

PRELIMINARY - NOT FOR CONSTRUCTION OR BIDDING

CIVIL NOTES & DETAILS

A PORTION OF TOLTEC MIDDLE SCHOOL

3315 NORTH TOLTEC ROAD
ELOY, ARIZONA 85131

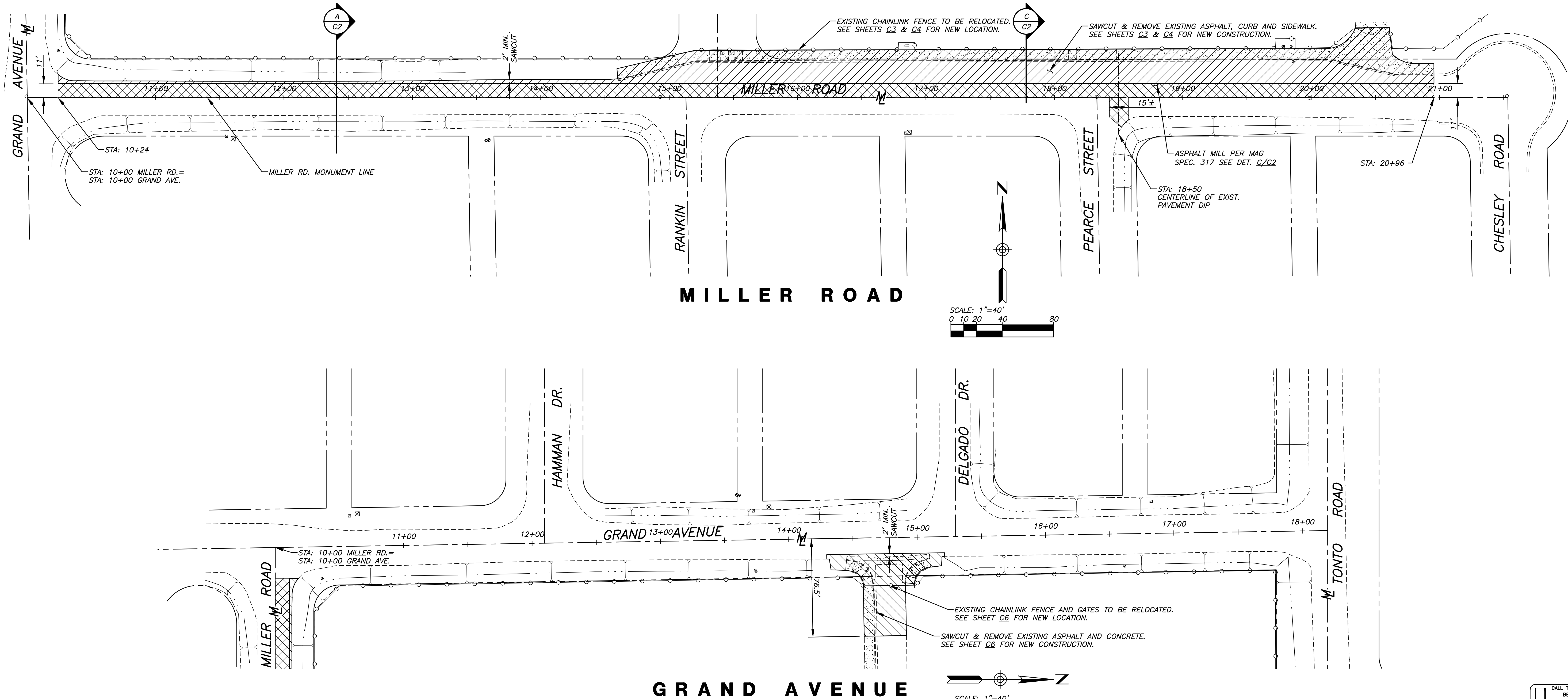
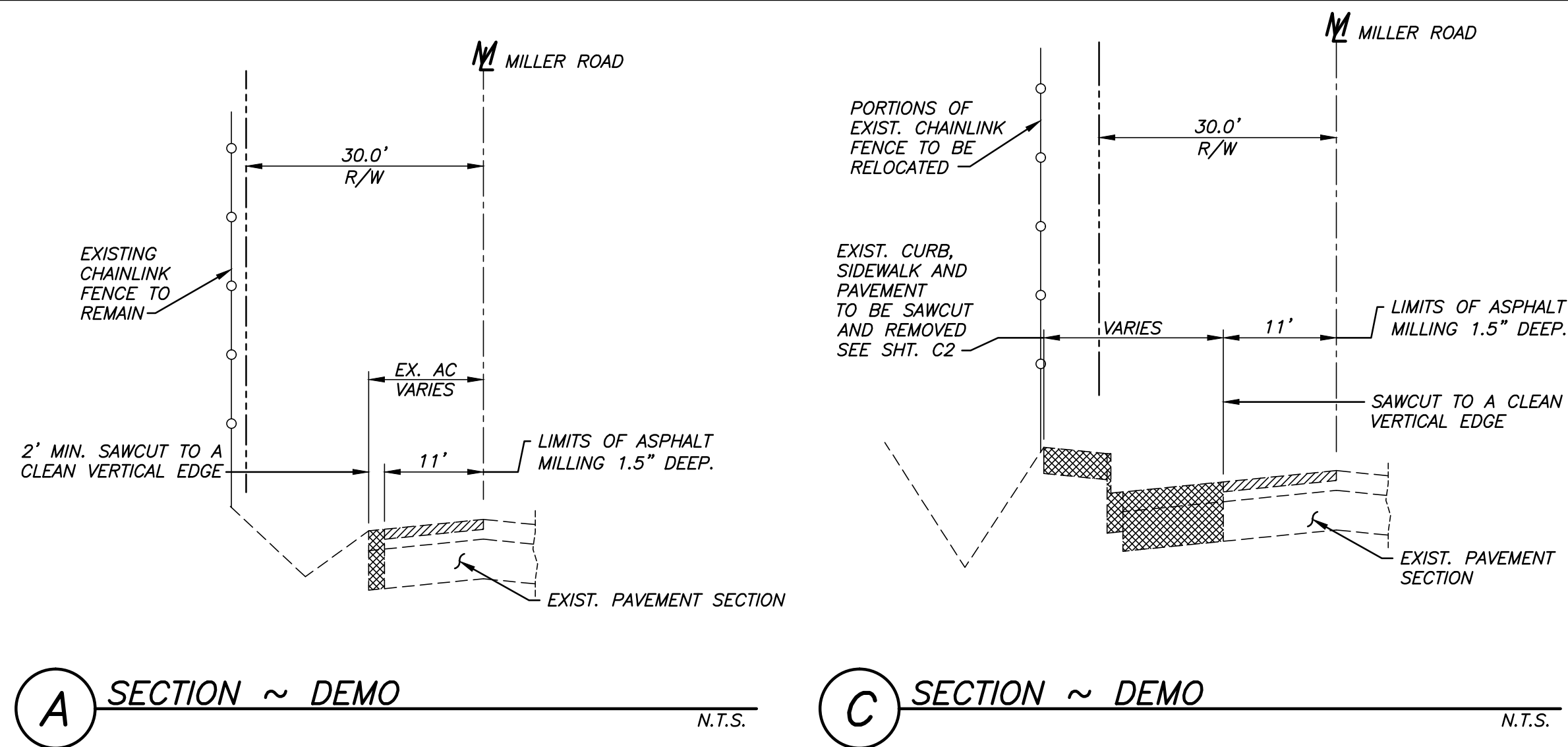
TOLTEC SCHOOL DISTRICT

3315 NORTH TOLTEC ROAD
ELOY, ARIZONA 85131

Date	7/6/15
Scale	AS NOTED
Drawn	EMK
Checked	JJP
Job	0194.1
Sheet	C1
of 7	Sheets

G&A JOB# 0194.1

S:\Projects\2010\01941 - Toltec M.S\01941C2.dwg Plotted 7/07/15 - 1:38pm by Eric

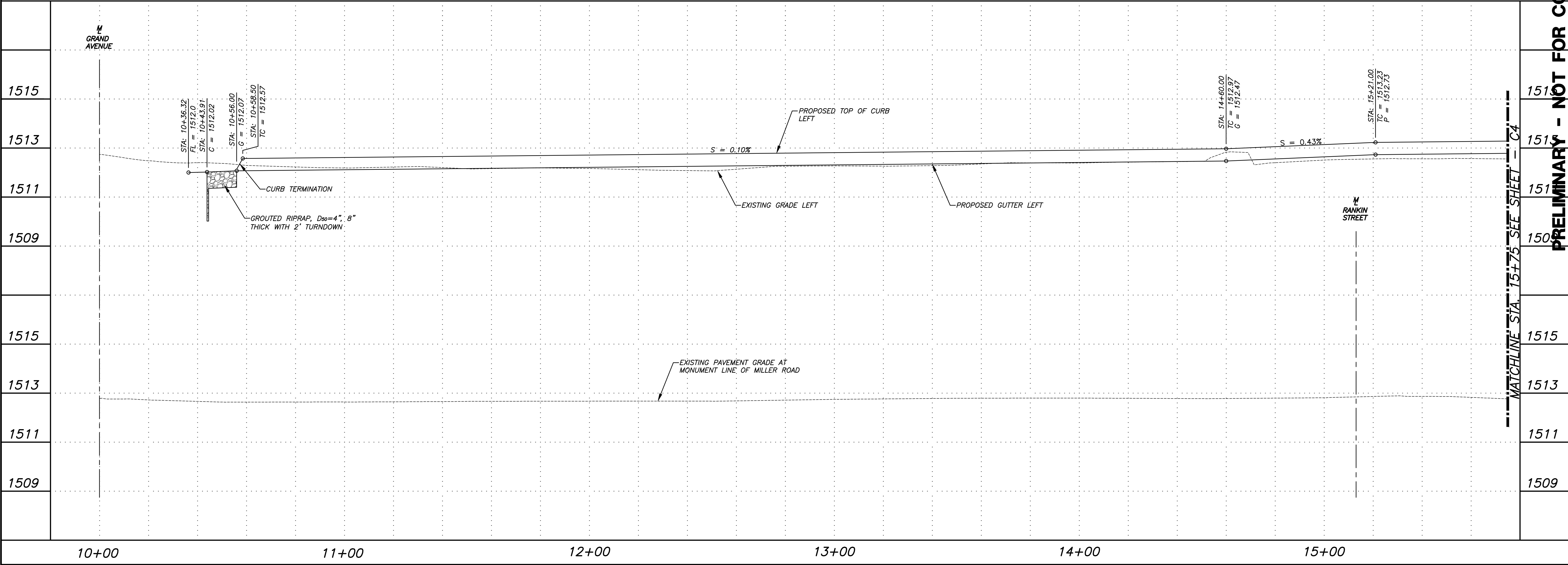
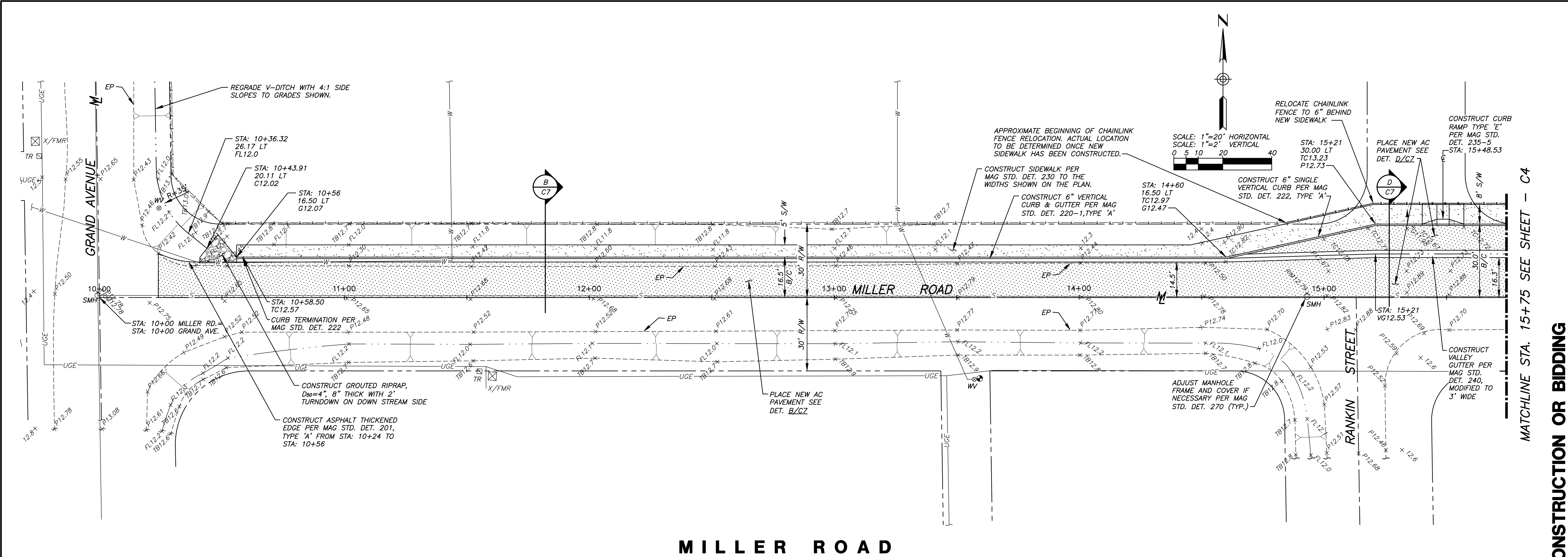


PRELIMINARY - NOT FOR CONSTRUCTION OR BIDDING

REVISIONS		BY
This drawing is an instrument of service. It is the property of GERVASIO & ASSOC. INC. and may not be reproduced or reproduction hereof used without permission.		
GERVASIO & ASSOC. INC. CONSULTING ENGINEERS 77 E. THOMAS ROAD, SUITE 120 PHOENIX, ARIZONA 85012 (602) 285-1720 FAX 285-1530		
PRELIMINARY		
DEMO PLAN & DETAILS		
OF: A PORTION OF TOLTEC MIDDLE SCHOOL 3315 NORTH TOLTEC ROAD ELOY, ARIZONA 85131		
FOR: TOLTEC SCHOOL DISTRICT 3315 NORTH TOLTEC ROAD ELOY, ARIZONA 85131		
Date	7/6/15	
Scale	AS NOTED	
Drawn	EMK	Checked JJP
Job	0194.1	
Sheet	C2	
of 7	Sheets	

CALL TWO WORKING DAYS BEFORE YOU DIG
802-263-1100
(INSIDE MARICOPA COUNTY)
1-800-STAKE-IT
(OUTSIDE MARICOPA COUNTY)

S:\Projects\2010\01941 - Toltec M.S\01941C3.dwg Plotted 7/07/15 - 1:39pm by Eric



REVISIONS		BY

This drawing is an instrument of service. It is the property of GERVASIO & ASSOC. INC. and may not be reproduced or reproduction hereof used without permission.

GERVASIO & ASSOC. INC.
CONSULTING ENGINEERS
77 E. THOMAS ROAD, SUITE 120
PHOENIX, ARIZONA 85012
(602) 285-1720 FAX 285-1530

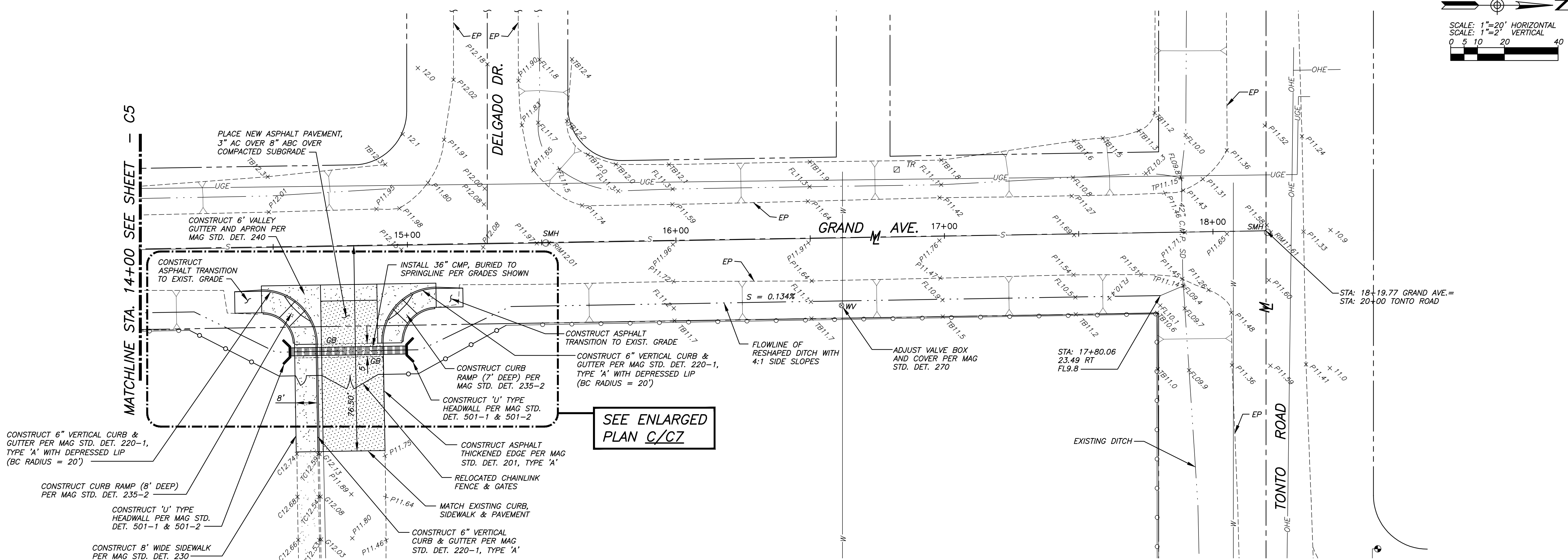
PRELIMINARY

PAVING PLAN & PROFILE	
OF:	A PORTION OF TOLTEC MIDDLE SCHOOL 3315 NORTH TOLTEC ROAD TOLTEC SCHOOL DISTRICT 3315 NORTH TOLTEC ROAD ELOY, ARIZONA 85131
FOR:	

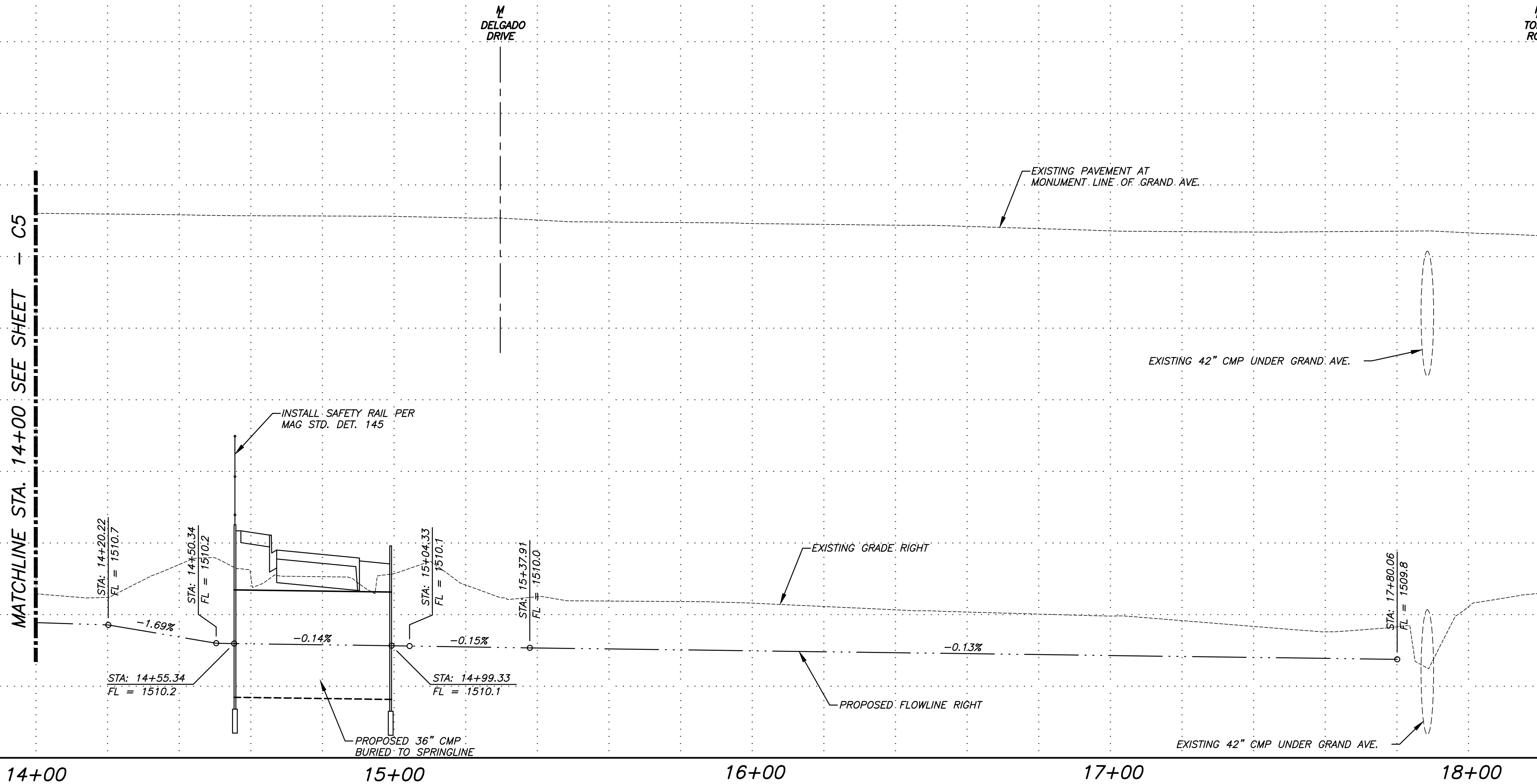
Date	7/6/15
Scale	AS NOTED
Drawn	EMK
Checked	JJP
Job	0194.1
Sheet	C3

of 7 Sheets
G&A JOB# 0194.1

S:\Projects\2010\01941 - Toltec M.S\01941C6.dwg Plotted 7/07/15 - 1:39pm by Eric



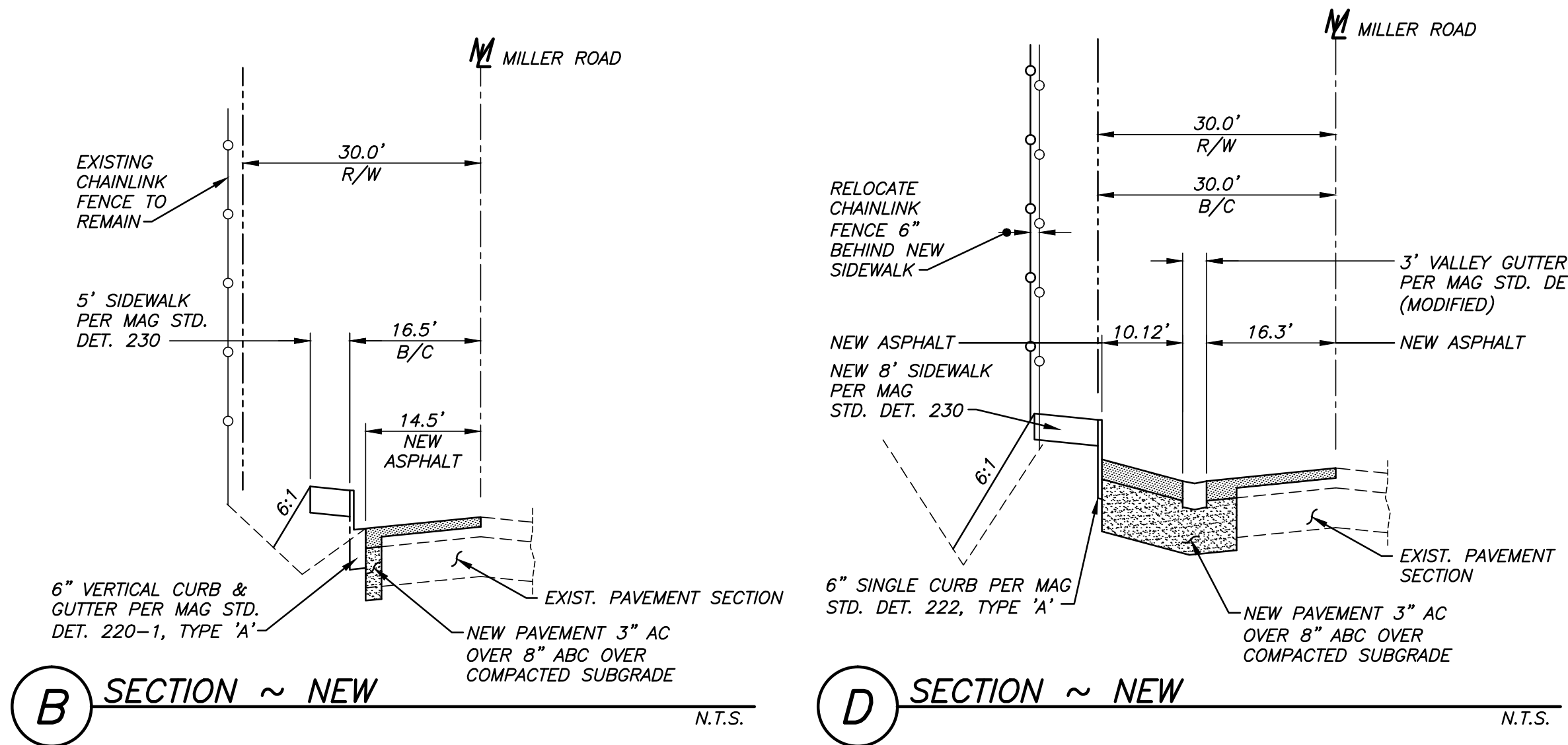
GRAND AVENUE



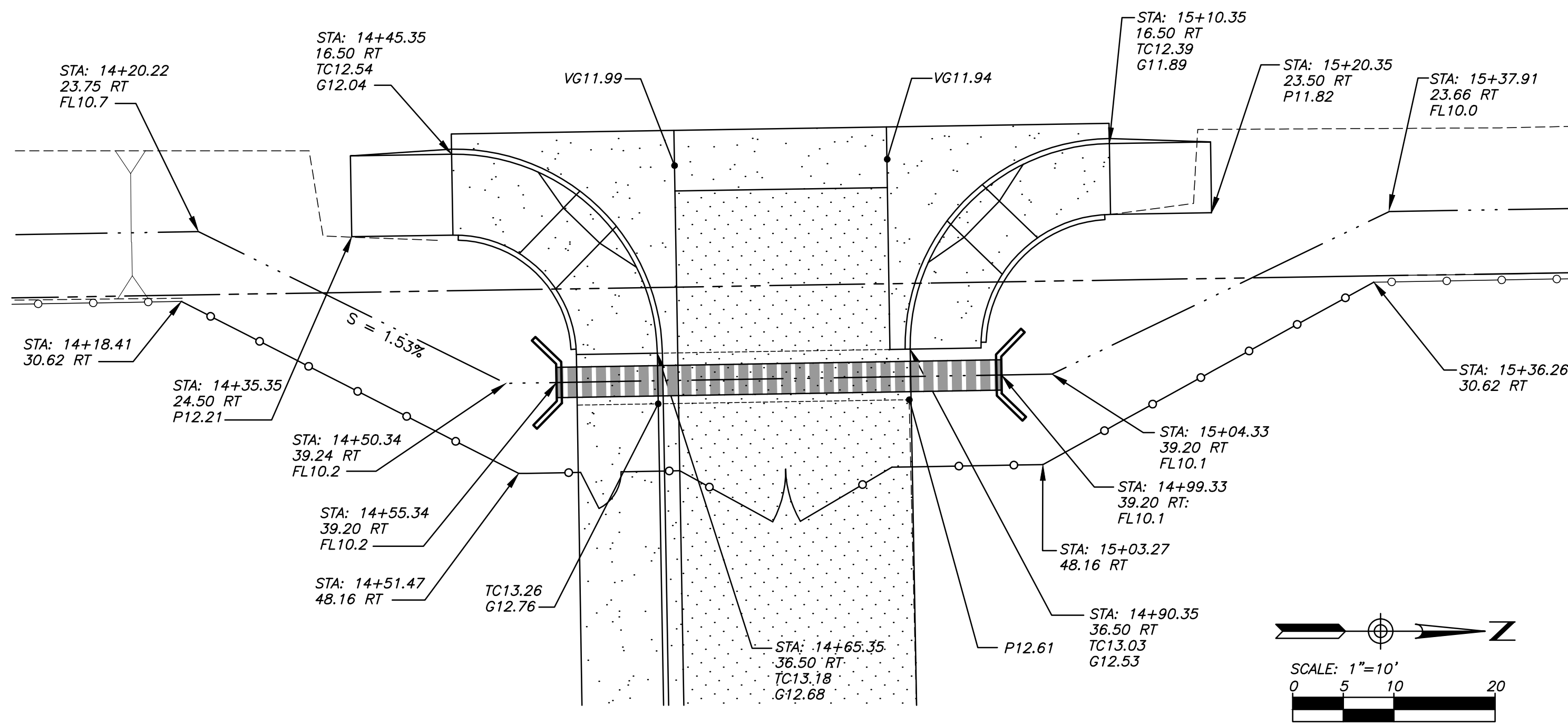
PRELIMINARY - NOT FOR CONSTRUCTION OR BIDDING

REVISIONS		BY
This drawing is an instrument of service. It is the property of GERVASIO & ASSOC. INC. and may not be reproduced or reproduction hereof used without permission.		
GERVASIO & ASSOC. INC.		
CONSULTING ENGINEERS		
77 E. THOMAS ROAD, SUITE 120		
PHOENIX, ARIZONA 85012		
(602) 285-1720 FAX 285-1530		
<div>PRELIMINARY</div>		
PAVING PLAN & PROFILE		
OF:	A PORTION OF TOLTEC MIDDLE SCHOOL 3315 NORTH TOLTEC ROAD ELOY, ARIZONA 85131	
FOR:	TOLTEC SCHOOL DISTRICT 3315 NORTH TOLTEC ROAD ELOY, ARIZONA 85131	
Date	7/2/15	
Scale	AS NOTED	
Drawn	EMK	Checked JJP
Job	0194.	
Sheet	C6	
of 7	Sheets	

S:\Projects\2010\01941 - Toltec M.S\01941C7.dwg Plotted 7/07/15 - 1:39pm by Eric



C ENLARGED GRADING PLAN ~ PRIVATE DRIVEWAY ENTRANCE



PRELIMINARY - NOT FOR CONSTRUCTION OR BIDDING

REVISIONS		BY
This drawing is an instrument of service. It is the property of GERVASIO & ASSOC. INC. and may not be reproduced or reproduction hereof used without permission.		
GERVASIO & ASSOC. INC. CONSULTING ENGINEERS 77 E. THOMAS ROAD, SUITE 120 PHOENIX, ARIZONA 85012 (602) 285-1720 FAX 285-1530		
PRELIMINARY		
SECTIONS & DETAILS		
OF:	A PORTION OF TOLTEC MIDDLE SCHOOL 3315 NORTH TOLTEC ROAD ELOY, ARIZONA 85131	
FOR:	TOLTEC SCHOOL DISTRICT 3315 NORTH TOLTEC ROAD ELOY, ARIZONA 85131	
Date	7/6/15	
Scale	AS NOTED	
Drawn	EMK	Checked JJP
Job	0194.1	
Sheet	C7	
of 7 Sheets		

CALL TWO WORKING DAYS
BEFORE YOU DIG
802-263-1100
(INSIDE MARICOPA COUNTY)
1-800-STAKE-IT
(OUTSIDE MARICOPA COUNTY)